



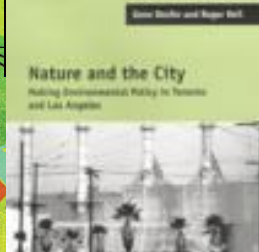
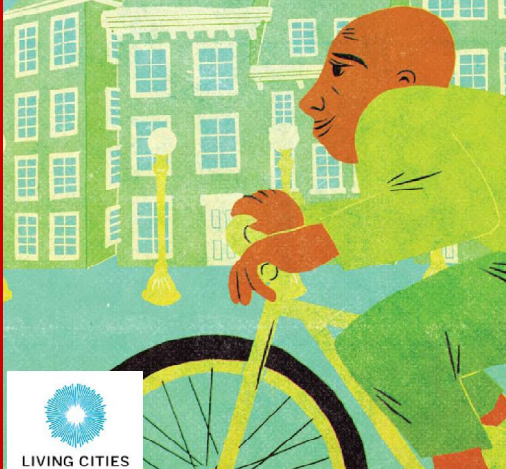
linking the sustainability and urbanism agendas: towards green cities



small steps andrew tindsley urbanism director BDP

GREEN CITIES

HOW URBAN SUSTAINABILITY EFFORTS CAN AND MUST
DRIVE AMERICA'S CLIMATE CHANGE POLICIES



Living in
Kronsberg



Volume 16 No 1

Our Planet

The magazine of the United Nations Environment Programme



GREEN CITIES

Luiz Inácio Lula da Silva
Challenges and Opportunity

Maria Mutagamba
Bridging the Water Gap

Yuriko Koike
The Spirit of "Mottai Nai"

Anna Tibajuka
Cities without Slums

Arnold Schwarzenegger
Global Effort

Ken Livingstone
Charging into the Future

Han Zheng
Rapid Progress



COMBATING CLIMATE CHANGE: CLINTON CLIMATE INITIATIVE

It's on everyone's agenda



great expectations – delivery can be more difficult

- respond to context
- engage with communities
- natural features
- movement
- urban environs
- climate

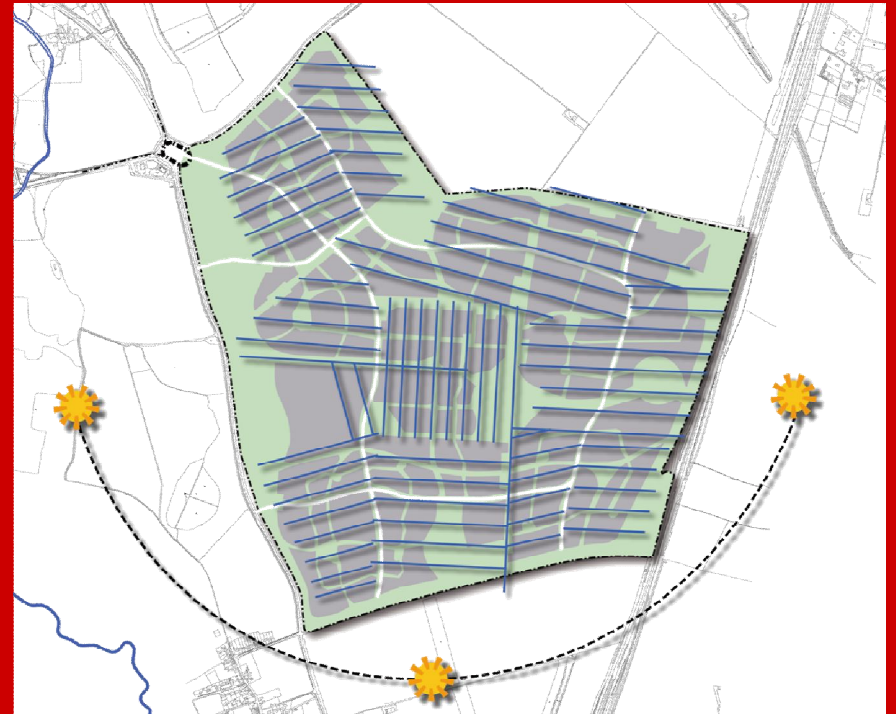


Start with the basics - Vision, Plan and Deliver



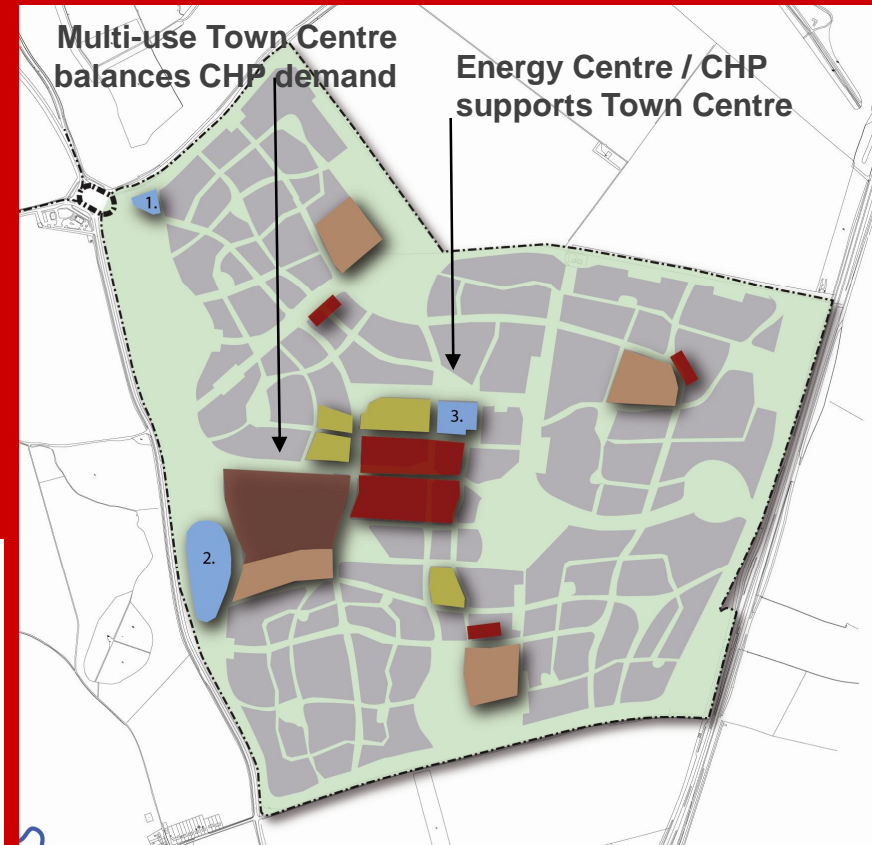
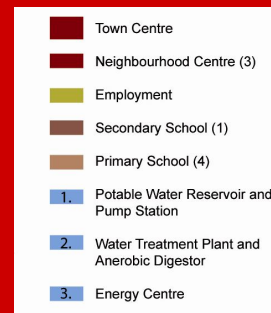
Use the layout to improve orientation to,
minimise solar gain and take
advantage of prevailing winds

Micro-climate



Carefully locating employment, retail, residential and community facilities to;
increase density and harness energy, water and waste management solutions

Land-use



Integrate walking and cycling into the masterplan at a strategic level

Walking distance informs the location of facilities

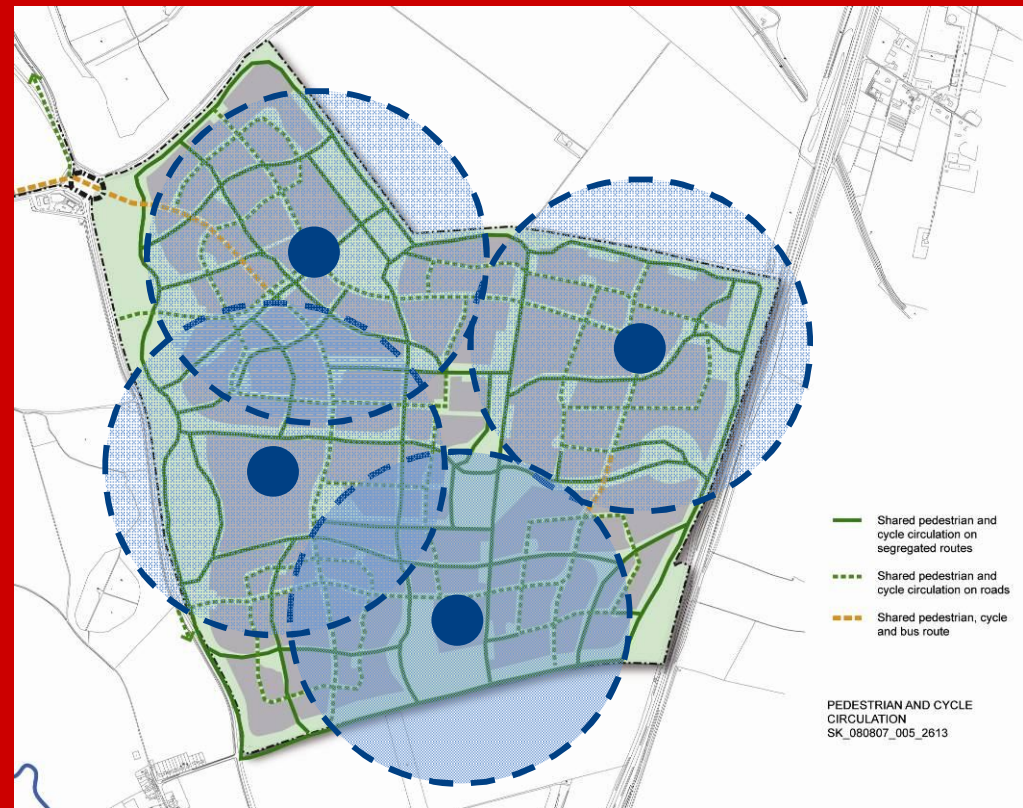
- Town centre

800m - 10 minutes walk

- Schools / neighbourhood centres

400m – 5 minutes – walk

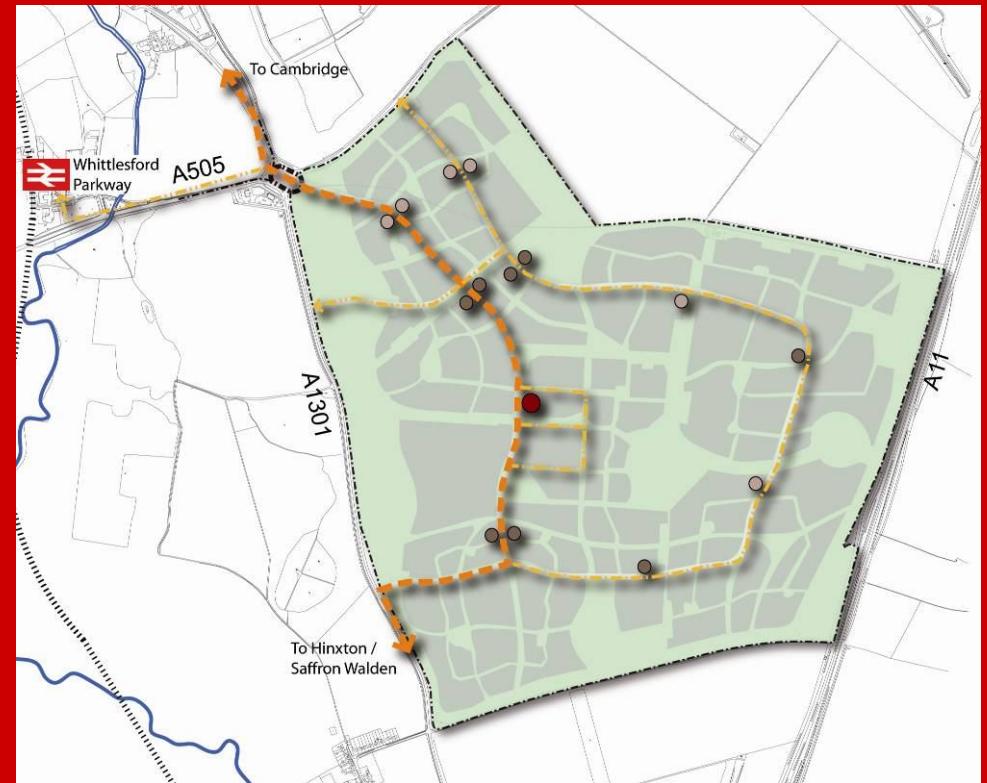
Tackling the transport issue



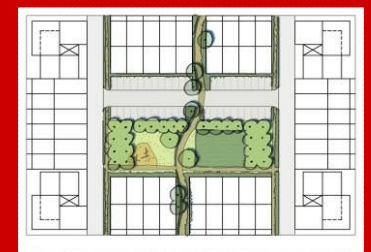
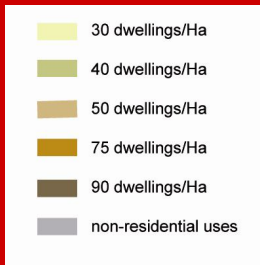
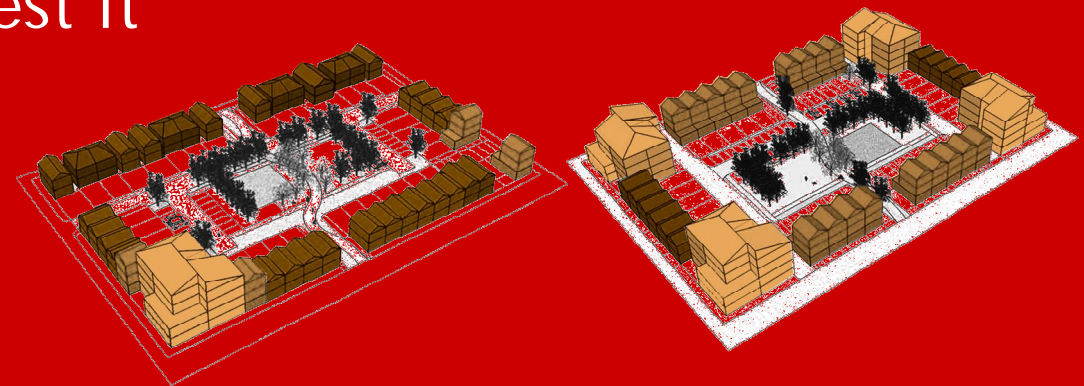
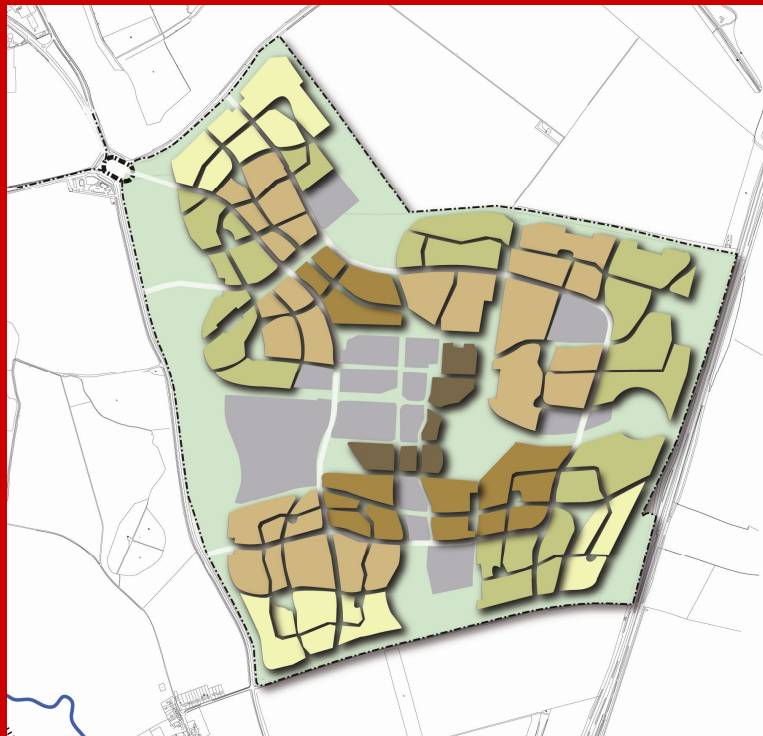
Create a network which serves the whole development

Try to ensure that of 70% of homes are within a 300m walk of public transport

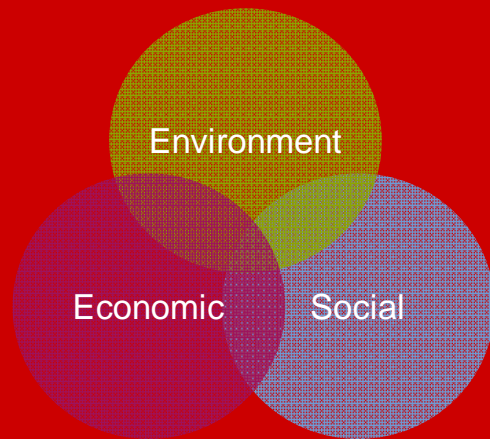
Tackling the transport issue



Density - does it work? test it



Develop a methodology



From one block.... through sustainable methodology...



and don't forget the
landscape!

a diverse network of green
and open space improves:

- walkability
- reduces car use
- increases biodiversity
- protects existing features



Green space

- adds variety
- enhances social sustainability
- and increases biodiversity



Allotment gardens



Play



Informal open space



Pedestrian and cycle paths



Swales

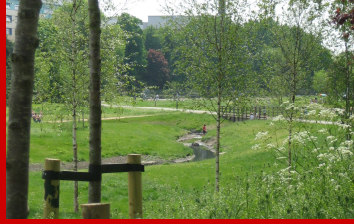
Mixed use schools



Town Centre



Wetlands



Green links through residential fabric



bringing it all together



Central Park



Hinxton
Grange setting



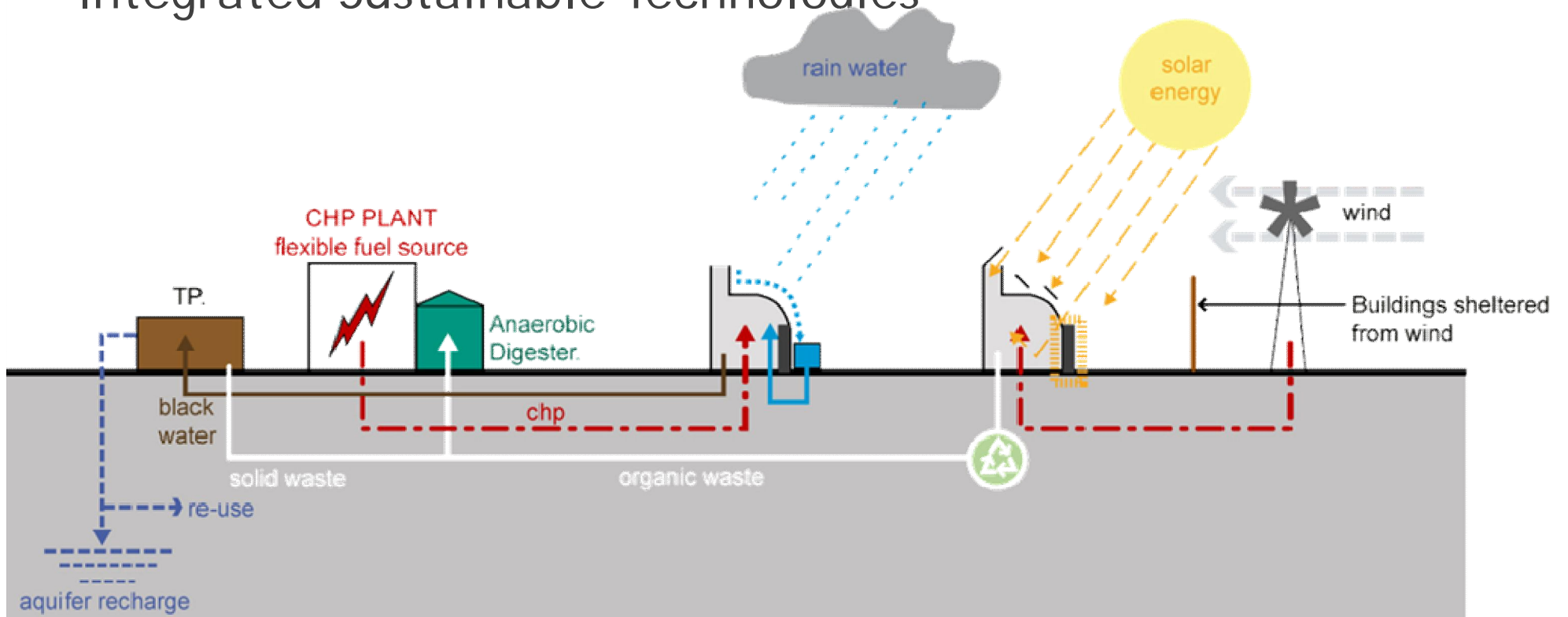
Sustainable
employment



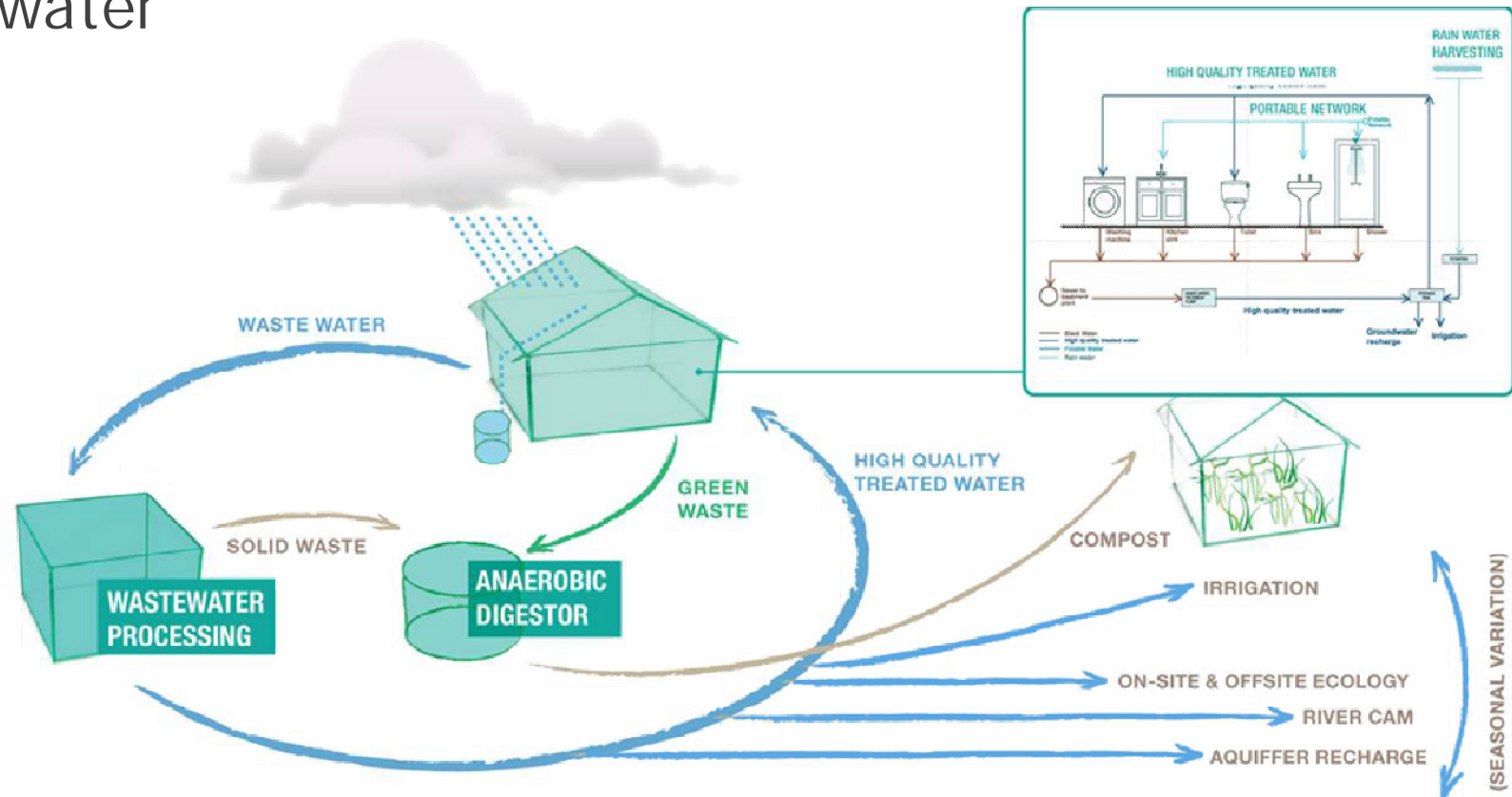
Buildings
respond to local
influences

And then there's technology!

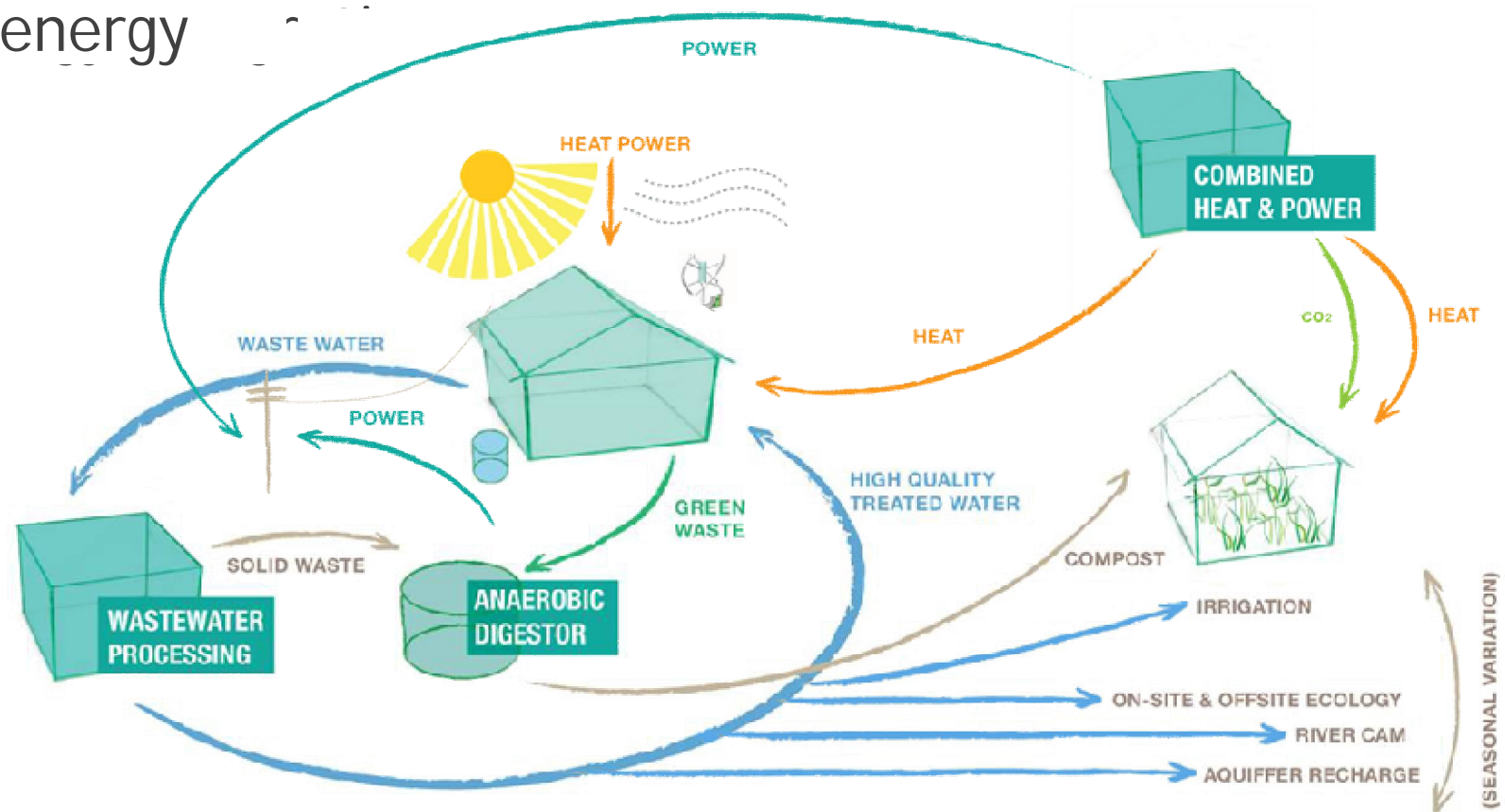
'Integrated Sustainable Technologies'



water



energy





whatever the solution to place the community at the heart



linking the sustainability and urbanism agendas: towards green cities